

PRODUCT CODE

RLC-100

tool's identification

diameter of pipe

TOOL'S IDENTIFICATION Every tool has its own code, which is used when ordering. Reinstatement cutters are found under code RLC. Collapsed line drills are found under code RCD. Overshot pipe cutters are found under code ROC.

DIAMETER OF PIPE There are from two up to four different size models of each tools. Tool sizes are determined by the diameter of pipe.
50 = 50 mm 75 = 75 mm 100 = 100 mm 150 = 150 mm

TOOL INFORMATION

REINSTATEMENT CUTTERS (RLC)

If you want to open a lateral during relining, the reinstatement cutter is the best choice for it. Renssi® have four different size effective tools in this tool collection.

SIZE	RLC-050 cutter for Ø 50mm pipe RLC-075 cutter for Ø 75mm pipe RLC-100 cutter for Ø 100mm pipe RLC-150 cutter for Ø 150mm pipe
WEIGHT	RLC-050 = 130 g RLC-075 = 310 g RLC-100 = 590 g RLC-150 = 1610 g
MATERIAL	steel / carbide



REINSTATEMENT CUTTER KITS

There are reinstatement cutter kits providing better results. Kit contains a cutter, a centering device and a centering brush. These attachments centralize the tool while rotating in the line which helps to open the lateral.

SIZE	RLC-050-C-BA centering device for Ø 50mm pipe RLC-075-C-BA centering device for Ø 75mm pipe RLC-075-C-A centering brush for Ø 75mm pipe RLC-100-C-BA centering device for Ø 100mm pipe RLC-100-C-A centering brush for Ø 100mm pipe
-------------	---

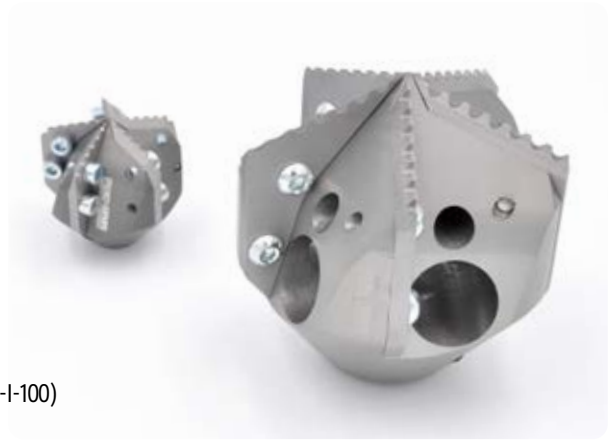
MATERIAL steel, rubber, nylon (brush strings)



COLLAPSED LINE DRILL (RCD)

You can remove collapsed liner easily with Renssi Collapsed line drill. Tool is designed to remove already cured epoxy and liner away.

SIZE	RCD-050 drill for Ø 50mm pipe RCD-100 drill for Ø 100mm pipe
WEIGHT	RCD-050 = 120 g RCD-100 = 650 g
MATERIAL	aluminium and tool steel
USAGE	spare parts available for the product (RCD-I-050 and RCD-I-100)



OVERSHOT PIPE CUTTER (ROC)

This tool is engineered for situations where you overshoot the liner. Cutting off the excess liner is a breeze with our Overshot Cutter. Centrifugal force formed by spinning the tool pushes out stainless steel blades that cut the pipe.

SIZE	ROC-100 cutter for Ø 100mm pipe ROC-150 cutter for Ø 150mm pipe
WEIGHT	ROC-100 = 300 g ROC-150 = 2070 g
MATERIAL	aluminium and tool steel
USAGE	spare parts available for the product (ROC-I-100 ja ROC-I-150)



SPAREPARTS

Renssi sells spare parts for RCD collapsed line drills and ROC overshot pipe cutters. Changing blades occasionally gives longer working life to the tool.



RCD-I-050 AND RCD-I-100

Changable blades sold as spare parts for collapsed line drill. Includes blades and screws to a tool.



ROC-I-100 / ROC-I-150

Changable blades sold as spare parts for overshot pipe cutter. Includes changable blades to a tool.



SAFETY INFO

NEVER ROTATE THE TOOLS OUTSIDE OF PIPE! · DO NOT USE WITH HYDRAULIC ROTATOR!

SUGGESTED ROTATOR FOR OUR TOOLS

Renssi® RCM-10 Cleaning Machine
Bosch GSB 21-2 RCT Professional Impact Drill
Renssi® RCM-25 Cleaning Machine
Renssi® RCM-36 Cleaning Machine



SUGGESTED GREASE FOR

Shell Gadus S2 V100 2 Multi-Purpose Lithium Grease
Specifications: DIN 51502 : K2K-30