

OPERATION & SAFETY MANUAL



! WARNING

*These instructions are for your personal safety. Always ensure that you have read and understood these instructions before using the tools. **SAVE THESE INSTRUCTIONS FOR FUTURE REFERENCE.***

TABLE OF CONTENTS

SAVE ALL WARNINGS AND INSTRUCTIONS FOR FUTURE REFERENCE

TOPIC	PAGE
Safety Information	3
General Operational Safety Information	4
Environment, Transport, Storage & Disposal	5
General Information: DN70-100 -> Models	6
Operating Pressures	7
CE Declaration of Conformity	8
Operating Instructions	9
Before Operation	9
Make a Test Run	10
Start Using the Tool	10
Navigation Accessories	11
Connection of Push Rods	12
Measuring Distance using CCTV Camera	14
Preparing the Bendy Packer	15
Locating the Repair on the Bendy Packer	16
Supporting Hose	18
Supporting Hose - Full Length of Bendy Packer	18
Supporting Hose - Ends of the Bendy Packer	20
APPENDIX 1: A Typical Repair Installation Method	21
Inflating the Bendy Packer	27
Removing the Bendy Packer (Post Installation)	28
Maintenance, Service & Repair	29
Accessories & Spare Parts	30
Warranty Policy & Procedure	32

To watch practical demonstration videos, take a course, or to download an electronic copy of these Instructions, please visit www.picoteinstitute.com. Please note that videos and courses are not intended as a replacement or alternative to this operating and safety manual, but only as an additional learning tool.

SAFETY INFORMATION

SAVE ALL WARNINGS AND INSTRUCTIONS FOR FUTURE REFERENCE

WARNING

This section contains important safety information. Failure to comply could result in serious injury or death.

Safety Symbols

Safety symbols are used throughout this manual to draw attention to potential hazards.



Danger risk of serious injury, follow instructions.

CAUTION

Personal Protective Equipment (PPE)

Always use Personal Protective Equipment including suitable protective clothing, footwear, plus:



Suitable eye protection to protect against sewage, chemicals or dust from irritating eyes.



Suitable heat and cut-resistant gloves to help prevent any hand injuries. Any open injuries or skin irritations should always be covered to avoid contact with sewage, chemicals or dust.



Suitable respirator to prevent any dust or fumes being inhaled or consumed, which could cause occupational asthma or dermatitis.



Suitable ear protection to protect against hearing loss.

Drains and Sewers may contain substances such as bacteria and chemicals. Take good care of hygiene during work and only use serviced, working equipment without any damaged parts.

GENERAL OPERATIONAL SAFETY INFORMATION

SAVE ALL WARNINGS AND INSTRUCTIONS FOR FUTURE REFERENCE

⚠ WARNING *This section contains important safety information.*

Always read all safety warnings and instructions. Failure to follow warnings and instructions may result in serious injury or death.



Picote Bendy Packers are only intended for use in circular pipe profiles!

The Picote Bendy Packers are designed for the installation of Trenchless Point Repairs such as Localised, Spot, Point or Patch Repairs in damaged or separated pipe bends. A resin impregnated patch is loaded onto the Bendy Packer, pushed through the pipe, aligned over the damaged section of the bend and then inflated using compressed air. The Bendy Packer expands from the middle first, expanding evenly to make the point repair flush against pipe wall. This enables a near wrinkle-free end result. **Every renovation job is different and selecting the correct method requires experience & skill. Installation of a point repair may not be appropriate in all cases as**



it may cause further damage to the pipe.

- **Always wear suitable chemical resistant gloves, eye and ear protection.**

Other personal protective equipment, such as respirator and overalls should be worn where necessary.

- **Choose correct size Bendy Packer for the job.** Only use in pipes of the intended diameter.

- **Before each use** always inspect the Bendy Packer and associated installation tools carefully for any potential wear or damage.

- **Immediately replace any damaged equipment.**
- **Never inflate the Bendy Packer outside of the pipe.**
- **Do not over-pressurise the Bendy Packer!**

Avoid standing near the Bendy Packer when it is fully inflated because if it bursts the debris will fly towards you at high speed and the loud bang noise could be harmful to hearing if protective hearing gear is not being worn.

- **Never leave filled Packers unattended!**

Only use the Bendy Packer with original Picote accessories & spare parts. Accessories and spare parts should only be used in the manner intended and as described by Picote Solutions.

ENVIRONMENT

Operational Ambient Temperature Range: 0 °C to +50 °C (32 °F to 122 °F)

Storage Ambient Temperature Range: -20 °C to +50°C (-4 °F to 122 °F) condensation free

TRANSPORT & STORAGE

The Bendy Packer should be transported unpressurised in a protective tube to protect it from the elements and to prevent any premature wear that could cause accidents and/or bladder malfunctions.

The Bendy Packer should be stored indoors to protect it from rain and sunlight and somewhere with a constant ambient temperature.



Where the Bendy Packer has been stored for long periods of time it, will need to be slowly inflated/deflated with compressed air a few times before being used. This helps the elastic materials to stretch, enabling the Bendy Packer to perform correctly.

If the Bendy Packer has been stored in an environment colder than 0°C (32°F), the Packer should be stood at room temperature for approximately 2 hours prior to use.

DISPOSAL

The two end caps, lock plate, connectors, bolts and wires can be recycled in metal waste collection points. **The hoses can be disposed of as rubber waste.**

Always follow local waste handling rules and regulations.

GENERAL INFORMATION: DN75-100 -> MODELS

SAVE ALL WARNINGS AND INSTRUCTIONS FOR FUTURE REFERENCE

The Bendy Packers in sizes DN70-100 (3"-4") to DN225-300 (9"-12") are fitted with a short connection hose which allows the attachment of the Picote Push Rods. The amount of push rods required will vary by installation length and project requirements.

The use of the Picote Push Rods enables the operator to push/pull the Bendy Packer through the pipe, rotate, inflate and deflate using multiple quick connect rods. (Picote Push Rods sold separately).



For the Bendy Packers in sizes DN70-100 (3"-4") to DN225-300 (9"-12") you can insert an additional glass fibre rod through the Bendy Packer and all the way to the end cap. This patented feature is referred to as "front wheel drive" and it helps navigate the Bendy Packer through the pipes and can be used in combination with the Picote Push Rods when required.



OPERATING PRESSURES

SAVE ALL WARNINGS AND INSTRUCTIONS FOR FUTURE REFERENCE



Before use: ensure correct (maximum) operating pressure for the tool.

Excessive pressure can cause the Bendy Packer to fail or explode.

The correct operating pressure can also be found marked on the end cap.

Picote Bendy Packers are only intended for use in circular pipe profiles!

Model	Max. Operating Pressure Bar/PSI
Bendy DN50 (2")	COMING SOON
Bendy DN70 (3")	COMING SOON
Bendy DN75-100 (3"-4")	3.5 Bar / (50 PSI)
Bendy DN100-125 (4"-5")	2.5 Bar / (36 PSI)
Bendy DN 125-150 (5"-6")	2.5 Bar / (36 PSI)
Bendy DN150-200 (6"-8")	2.0 Bar / (29 PSI)
Bendy DN225-300 (9"-12")	COMING SOON

CE DECLARATION OF CONFORMITY

SAVE ALL WARNINGS AND INSTRUCTIONS FOR FUTURE REFERENCE

We Picote Solutions Oy Ltd as the responsible manufacturer, declare that the following Picote Solutions Oy Ltd point repairing tool:

Picote Bendy Packer

Models: DN50 (2"), DN70 (3"), DN75-100 (3"-4"), DN100-125 (4"-5"), DN125-150 (5"-6"), DN150-200 (6"-8") & DN225-300 (9"-12").

are of series production and

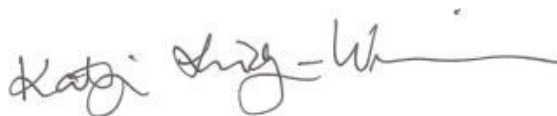
Conform to the following EU Directive:

2014/68/EU

The technical documentation is kept by our authorised representative in Europe who is:

Picote Solutions Oy Ltd, Pienteollisuustie 24
06450 Porvoo, Finland

4th October 2022



Katja Lindy-Wilkinson
C.E.O.

Picote Solutions Oy Ltd
Pienteollisuustie 24, 06450 Porvoo, Finland

OPERATING INSTRUCTIONS

SAVE ALL WARNINGS AND INSTRUCTIONS FOR FUTURE REFERENCE

CAUTION

This section contains important safety and operating information.

Picote Bendy Packers are only intended for use in circular pipe profiles!

BEFORE OPERATION:

Use CCTV inspection camera to:

1. Check the severity and extent of the damage.
2. Measure the diameter of the pipe and length of the repair required.
3. Check possible changes in pipe diameter and any holes or damage over $\varnothing 25\text{mm}$ ($\varnothing 1''$)
4. Is the point repair the correct repair method for the job? If damage is severe and/or spread over a long area, other repair methods should be considered.
5. Select the correct diameter Bendy Packer and length for the repair. If longer repairs are required you can make multiple repairs by overlapping, but will need to take into account that this reduces the internal diameter of the pipe.

If there are connections, transitions or large areas of pipe damage on the repairable area, the Bendy Packer must be properly supported using suitable material to prevent the bladder from over expanding. **The Bendy Packer can swell out and burst if no supporting hose/liner etc. is used. (Refer to Page 18)**

- Ensure that you have selected the correct size Bendy Packer for the job and visually inspect it for signs of damage or wear. Make sure that there is an air regulator on the air supply line which can be used to adjust the pressure precisely and control the inflation speed.
- **The pipe must be clean** and free of any dirt, burrs, sharp edges etc. Depending on the resin system being used, the inner wall on the pipe should be dry.
- When installing a repair in a plastic pipe, it is worth abrading the inside of the pipe, using the Picote Smart Cutter™, as this will help the repair bond to the host pipe.
- Keep your working area clean and prevent unauthorised access to the work site. Ensure proper ventilation and lighting.



MAKE A TEST RUN

It is important to make a test run prior to installing the repair to ensure you're able to set-up & navigate the Bendy Packer to the desired spot within the cure time of the resin. **Do not attempt to repair the pipe using this method if the installation time exceeds the curing time.**

Consider whether or not you need to pull or push the Bendy Packer into the correct position. Take suitable measurements and then mark the Push Rods and/or pulling-in rope to use as an aid to help locate the Bendy Packer to the correct position within the pipe.

STARTING & USING THE TOOL

Where the Bendy Packer has been stored for long periods of time it will need to be slowly inflated/deflated with compressed air a few times before being used. This helps the elastic materials to stretch enabling the Bendy Packer to properly perform. Prior to doing this you need to fully place the Bendy Packer inside the pipe.

OPERATING INSTRUCTIONS

SAVE ALL WARNINGS AND INSTRUCTIONS FOR FUTURE REFERENCE

NAVIGATION ACCESSORIES

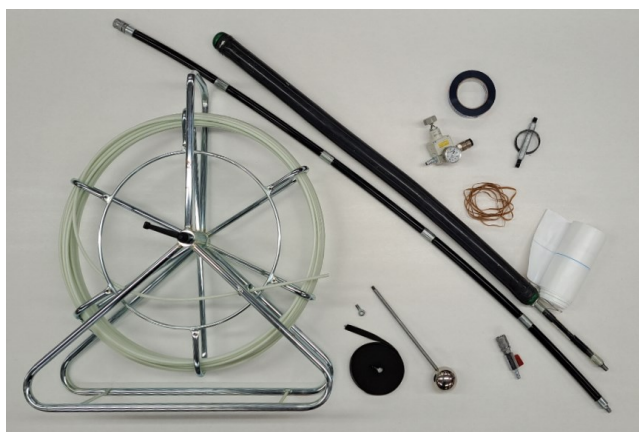
The following range of accessories will assist in pushing / pulling the Bendy Packer through the pipe to locate the repair.



- A rope can be attached to the Filler Cap to assist pulling the Bendy Packer out of the pipe.



- An M8 eye bolt and pull rope can be fitted to the End Cap to enable the operator to pull the Bendy Packer into the position.
- A Navigation Guide can be screwed into the End Cap to help guide the Bendy Packer around bends when pushing it into place.



A complete set of equipment is available.

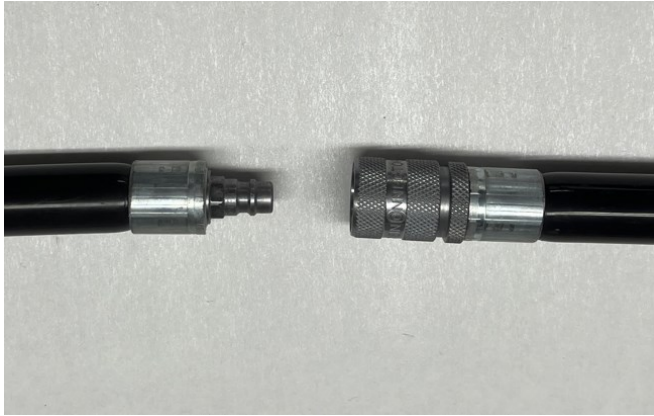
Product ordering numbers can be found listed on pages 30-31.

OPERATING INSTRUCTIONS

SAVE ALL WARNINGS AND INSTRUCTIONS FOR FUTURE REFERENCE

CONNECTING PICOTE PUSH RODS

Using Picote Push Rods gives you possibility to push, pull, rotate, inflate and extend the install length of the repair. Each push rod is 1.5 metres (5 ft) in length.



The Push Rod fittings have a hex socket that must be aligned to connect.

Left: Male-type connector

Right: Female-type connector with turning lock ring.



To join the rods together you align the hex socket, push fittings together and then tighten the locking ring.

Ensure fittings are completely pushed together and won't come loose if you try to pull them apart.



Loosen the locking ring.

The fittings can be disconnected by pulling the collar from the female-type fitting towards the locking ring.

OPERATING INSTRUCTIONS

SAVE ALL WARNINGS AND INSTRUCTIONS FOR FUTURE REFERENCE



The Picote Push Rods have to be secured with the locking ring, which is located on the rear of the female-type fitting.



Screw the locking ring until it's completely against the collar.

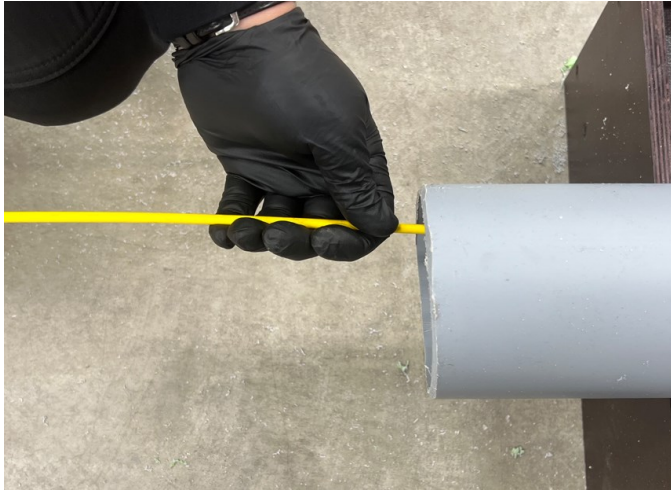


Wrap protective tape around each fitting to prevent resin from getting inside fittings.

OPERATING INSTRUCTIONS

SAVE ALL WARNINGS AND INSTRUCTIONS FOR FUTURE REFERENCE

MEASURING DISTANCE USING CCTV CAMERA



Carefully push the camera through the pipe until the camera head is in the centre of the damaged section of pipe where the repair is to be installed.

Mark the distance on the camera cable using a piece of PVC tape. Make sure the tape cannot move.



Place the camera head and Bendy Packer (with Push Rods attached) side by side. Make sure that the camera is positioned in the middle of the Packer and replicate the distance on the Push Rods.



Using the marker tape on the camera as a guide, fasten another piece of PVC marking tape onto the Picote Push Rod to indicate the correct distance to install the repair in the pipe.

OPERATING INSTRUCTIONS

SAVE ALL WARNINGS AND INSTRUCTIONS FOR FUTURE REFERENCE

PREPARING THE BENDY PACKER



The Bendy Packer has to be unpressurised.

The outer surface of the Bendy Packer has to be covered with a stretch film. This reduces the need for cleaning the Bendy Packer and ensures a longer lifetime.



Before covering the Bendy Packer with the stretch film, attach pull ropes etc.

Ensure that the threaded connectors, on either of the cap ends, are not covered.

At an approximately 45° angle, wrap the packer from front to rear, overlapping each pass by 150mm (6").

Tape each end to secure the protective wrapping.



Ensure that the whole length of the Bendy Packer is covered with the film.

OPERATING INSTRUCTIONS

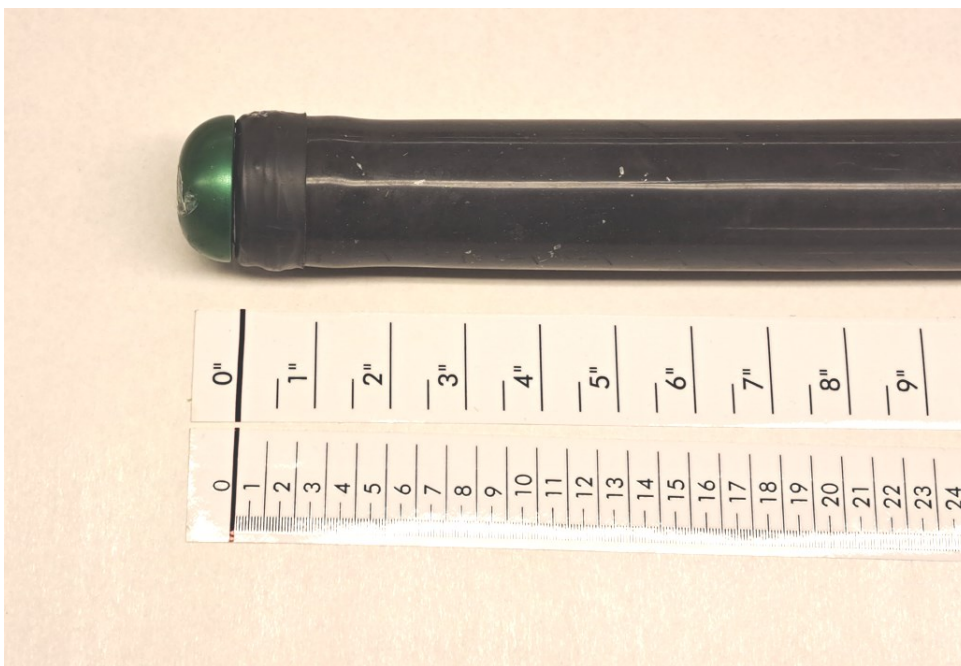
SAVE ALL WARNINGS AND INSTRUCTIONS FOR FUTURE REFERENCE



LOCATING THE REPAIR ON THE BENDY PACKER

Due to the structure of the Bendy Packer, both ends must be liner/patch free as the rubber does not fully inflate around the end caps. If the Point Repair is located too close to the end caps, the Bendy Packer will not fully inflate and the Point Repair will not make full contact against the inner wall of line to be repaired. Therefore, it is recommended to use the following measurements at minimum to be on safe side.

The 'off-limits' zone is measured at each end of the Bendy Packer, from the end of the bladder where it meets the metal cap (refer to photograph and table below).



BENDY PACKER SIZE	MEASURE FOR OFF-LIMITS-ZONE
DN75-100 (3"-4")	15cm (6")
DN100-125 (4"-5")	
DN125-150 (5"-6")	
DN150-200 (6"-8")	17.5cm (7")

OPERATING INSTRUCTIONS

SAVE ALL WARNINGS AND INSTRUCTIONS FOR FUTURE REFERENCE



Check the off-limits-zone from the table on Page16, measure the distance on the on the surface of the film using a suitable marker pen.



Cut the required amount of liner/patch staying within the section between the off-limit-zones.



When inflating, the Bendy Packer could swell out and burst if no supporting hose is used!

OPERATING INSTRUCTIONS

SAVE ALL WARNINGS AND INSTRUCTIONS FOR FUTURE REFERENCE

When inflating, the Bendy Packer could swell out and burst if no supporting hose is used!



SUPPORTING HOSE

If there are any connections, transitions, major pipe damage or brittle pipe on the **repairable area** the Packer must be properly supported using a suitable restricting material, such as a length of calibration hose.

Depending on the situation, the supporting hose can be installed on one end, both ends or for the whole length of the Packer.

SUPPORTING HOSE - FULL LENGTH OF BENDY PACKER



Measure out the 'support hose' and cover the Bendy Packer from the end cap to the adapter hose located in the filler cap.



Fold support hose neatly around end cap.

OPERATING INSTRUCTIONS

SAVE ALL WARNINGS AND INSTRUCTIONS FOR FUTURE REFERENCE



Secure the support hose in position by taping it to both end caps. Do not cover the threaded connectors on the end caps.



Finally, use rubber bands (doubled over if needed), approximately every 25cm (10"), to secure the support hose on to the bladder.

OPERATING INSTRUCTIONS

SAVE ALL WARNINGS AND INSTRUCTIONS FOR FUTURE REFERENCE

SUPPORTING HOSE - ENDS OF THE BENDY PACKER



When using support only on the ends, the hose should be measured in way it will reach at **minimum 10cm (4")** under the patch. The same rule applies when patches are shorter than the full length.



Secure the supporting hose by taping it to the metal end cap and use a doubled over rubber band at the far end of the support hose.



Copy the off-limit-zone measure on to the surface of the support hose using a marker pen.

SAVE ALL WARNINGS AND INSTRUCTIONS FOR FUTURE REFERENCE



POINT REPAIR WET-OUT

The following pages contain an example of one type of resin and point repair system. Always check your country regulations, requirements and application restrictions regarding the use of the point repair for this application. Follow the instructions provided by the manufacturer and supplier of the point repair system.

The point repair used in this manual is presented for educational purposes only, to make the photos visually easier to understand.

⚠ WARNING



- Always wear protective equipment when handling resin! Chemicals and fumes may cause eye, skin and lung irritation. Ensure good ventilation at area where resin is mixed and handled.
- Always perform a test run before installing the wet-out-patch so that you are certain you can set-up & navigate the Packer to the desired spot within the resin curing time.
- Curing time depends on the resin that is used and prevailing temperature. Always read resins and patches specification to ensure compatibility and proper operation.

Do not use resin that has not been properly stored or has expired shelf life left.

Ensure that you have all the necessary equipment available and everything is set up before wet-out to ensure a good end result.

APPENDIX 1: A TYPICAL REPAIR INSTALLATION

SAVE ALL WARNINGS AND INSTRUCTIONS FOR FUTURE REFERENCE

The following pages contain an example of one type of resin and point repair system. Always check your country regulations, requirements and application restrictions regarding the use of the point repair for this application.

Follow the instructions provided by the manufacturer and supplier of the point repair system. The point repair used in this manual is presented for educational purposes only and to make the photos visually.

Depending of the type of the point repair used, the patch can be wetted-out on or off the Packer.
Usually it is easier to thoroughly wet-out the patch off of the Packer.



Ensure that your working area has been covered with protective film/cardboard etc.



After resin is mixed according to the instructions, pour a portion on the surface of the material.



Apply resin in portions and work it thoroughly into the material.

APPENDIX 1: A TYPICAL REPAIR INSTALLATION

SAVE ALL WARNINGS AND INSTRUCTIONS FOR FUTURE REFERENCE

The following pages contains an example of one type of resin and point repair system. Always check your country regulations, requirements and application restrictions regarding the use of the point repair for this application. Follow the instructions provided by the manufacturer and supplier of the point repair system. The point repair used in this manual are presented for educational purposes only and to make the photos visually easier to understand.



Secure that patch is properly impregnated & resin has absorbed evenly.



Pull patch carefully on top of the Packer.



Position patch on centre of the Packer.

APPENDIX 1: A TYPICAL REPAIR INSTALLATION

SAVE ALL WARNINGS AND INSTRUCTIONS FOR FUTURE REFERENCE

The following pages contains an example of one type of resin and point repair system. Always check your country regulations, requirements and application restrictions regarding the use of the point repair for this application. Follow the instructions provided by the manufacturer and supplier of the point repair system. The point repair used in this manual are presented for educational purposes only and to make the photos visually easier to understand.



Use the lines that you marked earlier for securing that patch ensure it is centered and won't extend into the off-limit zones.

Fold patch neatly.



There are few ways to secure the patch on to the Packer. In this example, the patch is secured with rubber bands.

Set patch neatly on top of the Packer and start securing it from the edge on side of the end cap using rubber bands (doubled over if needed).



Apply 3-4 rubber band in total, by setting them approximately every 10 - 15mm (1/2").

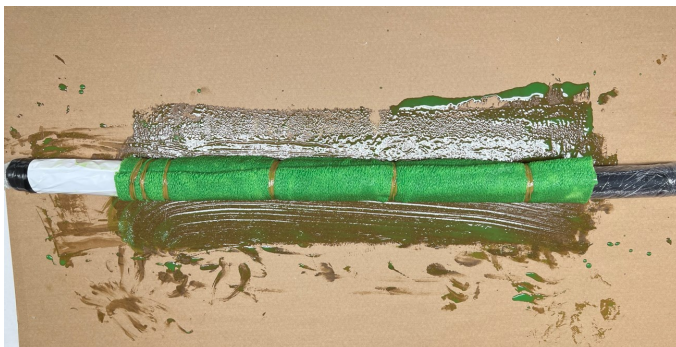
APPENDIX 1: A TYPICAL REPAIR INSTALLATION

SAVE ALL WARNINGS AND INSTRUCTIONS FOR FUTURE REFERENCE

The following pages contains an example of one type of resin and point repair system. Always check your country regulations, requirements and application restrictions regarding the use of the point repair for this application. Follow the instructions provided by the manufacturer and supplier of the point repair system. The point repair used in this manual are presented for educational purposes only and to make the photos visually easier to understand.



After the end caps side has been secured, start applying rubber bands every 10-15cm (4"-5").



It is recommended to secure **both ends** with 3-4 rubber bands each.

APPENDIX 1: A TYPICAL REPAIR INSTALLATION

SAVE ALL WARNINGS AND INSTRUCTIONS FOR FUTURE REFERENCE

The following pages contains an example of one type of resin and point repair system. Always check your country regulations, requirements and application restrictions regarding the use of the point repair for this application. Follow the instructions provided by the manufacturer and supplier of the point repair system. The point repair used in this manual are presented for educational purposes only and to make the photos visually easier to understand.



Depending on job site: Install Navigation Guide Ball or Pull Rope to the connector on the end cap if needed.

Attach the required number of Push Rods to Air Filler Cap end.



Insert the prepared Packer into the pipe.

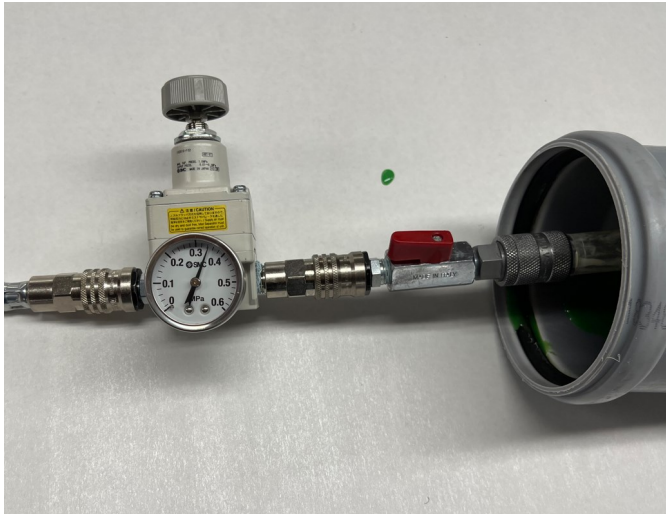


Navigate the Packer until you meet the tape marks on your Push Rods. The Packer should now be on the renovation location if you have accurately marked the correct distance to your Push Rods. Use an inspection camera to check that the Packer is properly positioned.

OPERATING INSTRUCTIONS

SAVE ALL WARNINGS AND INSTRUCTIONS FOR FUTURE REFERENCE

INFLATING THE BENDY PACKER



Inflate the Bendy Packer using a pressure regulator until it has reached its operating pressure.

Prevent all unauthorised access to the worksite to ensure tools remain untouched.



Keep Packer pressurised until patch is cured completely. Resin curing time depends of type of the resin that is used and the temperature. Curing takes longer in a cold environment.

REMOVING THE BENDY PACKER (POST INSTALLATION)

Once the patch/lining has fully cured, release the pressure from the Bendy Packer.

Once the Bendy Packer has fully deflated, pull it outside of the pipe using the Picote Push Rods and/or Pulling Rope.

Use a CCTV camera to confirm that the point repair has fully cured and is wrinkle-free.

If there is no need to install another Point Repair: remove the supporting hoses, stretch films etc., from the Bendy Packer.

Clean the installation equipment and working environment carefully and inspect the Bendy Packer for damage or wear.

MAINTENANCE



1. Before performing any maintenance always check that air supply line is disconnected.



2. Clean the surface of the Bendy Packer before and after the tool has been used using a damp cloth and soap.

Do not use chemicals such as Acetone or other cleaning agents as they will damage the Bendy Packer material and cause premature failure!



If the Bendy Packer has been stored for an unknown period of time or you are not aware of its condition, the Bendy Packer should be visually inspected and tested. The test should be done by placing the deflated Bendy Packer inside a correctly sized pipe, carefully pressurising the Bendy Packer inside and simultaneously monitoring for leaks.



Do not use the Bendy Packer if leaks are found and contact your local Picote Reseller.

The primary method for cleaning the Bendy Packer should be with a damp cloth and soap to clean the surfaces.

Protecting the Bendy Packer with stretch film reduces the need to use cleaning solvents.



SERVICE & REPAIR

The Bendy Packers must be repaired or serviced at Picote Service Centre by trained personnel.

Incorrectly assembled or serviced Bendy Packers are unsafe to use and can fail.

To find your nearest authorised Service Centre contact your Local Reseller or Picote Solutions.

SAVE ALL WARNINGS AND INSTRUCTIONS FOR FUTURE REFERENCE

Only use Picote Solutions accessories and attachments with the equipment described in this operation manual. The use of other accessories or attachments could present a risk of injury or death. The accessories or attachments should only be used in the proper and intended manner - always follow Picote Solutions instructions.

BENDY PACKERS

1510050060_3	Bendy Packer DN50/2" Length 60cm /2ft w. 3m/10ft filler hose
1510050060_5	Bendy Packer DN50/2" Length 60cm /2ft w. 5m/16ft filler hose
1510050100_3	Bendy Packer DN50/2" Length 100cm /3ft w. 3m/10ft filler hose
1510050100_5	Bendy Packer DN50/2" Length 100cm/3ft w. 5m/16ft filler hose
1510070060_5	Bendy Packer DN70/3" Length 60cm /2ft w. 5m/16ft filler hose
1510070060_10	Bendy Packer DN70/3" Length 60cm /2ft w. 10m/32ft filler hose
1510070100_5	Bendy Packer DN70/3" Length 100cm /3ft w. 5m/16ft filler hose
1510070100_10	Bendy Packer DN70/3" Length 100cm/3ft w. 10m/32ft filler hose
1510100100	Bendy Packer DN75-100 / 3-4" Length 100cm/3ft
1510100120	Bendy Packer DN75-100 / 3-4" Length 120cm/4ft
1510100150	Bendy Packer DN75-100 / 3-4" Length 150cm/5ft
1510100200	Bendy Packer DN75-100 /3-4" Length 200cm/6.5ft
1510125100	Bendy Packer DN100-125/4-5" Length 100cm/3ft
1510125150	Bendy Packer DN100-125/4-5" Length 150cm/5ft
1510125200	Bendy Packer DN100-125/ 4-5" Length 200cm/6.5ft
1510150100	Bendy Packer DN125-150/5-6" Length 100cm /3ft
1510150120	Bendy Packer DN125-150/5-6" Length 120cm/4ft
1510150150	Bendy Packer DN125-150/5-6" Length 150cm/5ft
1510150200	Bendy Packer DN125-150/5-6" Length 200cm/6.5ft
1510200150	Bendy Packer DN150-200/6-8" Length 150cm/5ft
1510200200	Bendy Packer DN150-200/6-8" Length 200cm/6.5ft
1510300150	Bendy Packer DN225-300/9-12" Length 150cm/5ft

ACCESSORIES & SPARE PARTS

SAVE ALL WARNINGS AND INSTRUCTIONS FOR FUTURE REFERENCE

Only use Picote Solutions accessories and attachments with the equipment described in this operation manual. The use of other accessories or attachments could present a risk of injury or death. The accessories or attachments should only be used in the proper and intended manner, and always follow Picote Solutions instructions.

ACCESSORIES

1510000001	Packer Navigation System DN50-70 / 2-3"
1510000002	Packer Navigation System DN100-150 / 4-6"
1510000003	Packer Navigation System DN200+ / 8" +
1510000004	Front Wheel Drive Glass Fiber Rod
1410000023	Push Rod DN100-150 / 4-6"
1410000032	Push Rod DN100-225 / 4-9"
1410000025	Installation Tool 2.0 Air Adapter
2340000002	Air pressure regulator EU 0-4bar

WARRANTY POLICY & PROCEDURE

SAVE ALL WARNINGS AND INSTRUCTIONS FOR FUTURE REFERENCE

Limited Warranty:

Picote warrants to the original End User that the Product purchased by such End User will operate in accordance with, and substantially conform to their published specifications when shipped or otherwise delivered to the End User and for a period of six (6) months, however, that Picote does not warrant any claim or damage under this Warranty if such claim or damage results from:

1. Consumable parts or normal wear and tear resulting from use of the Products,
2. Regular periodic maintenance of Products,
3. Misuse, neglect, or improper installation or maintenance of the Products, or use of Products not for their intended purpose,
4. Products that have been altered, modified, repaired, opened or tampered with by anyone other than Picote or an authorized Picote Service Centre, or unsuitable or unauthorized spare parts, accessories or third party products when using the Products or;
5. the use of the Products not in compliance with their respective Documentation, user manuals, safety and maintenance instructions, and any usage restrictions contained therein, or
6. accident, fire or other hazard.

Otherwise, the Products are sold AS IS. End User is responsible for using the Products within their specifications and instructions as contained in the Documentation.

EXCEPT AS SPECIFIED IN THIS WARRANTY, ALL EXPRESS OR IMPLIED CONDITIONS, REPRESENTATIONS, AND WARRANTIES INCLUDING, WITHOUT LIMITATION, ANY IMPLIED WARRANTY OR CONDITION OF MERCHANTABILITY, FITNESS FOR A PARTICULAR PURPOSE, NON INFRINGEMENT, SATISFACTORY QUALITY OR ARISING FROM A COURSE OF DEALING, LAW, USAGE, OR TRADE PRACTICE, ARE HEREBY EXCLUDED TO THE EXTENT ALLOWED BY APPLICABLE LAW. TO THE EXTENT AN IMPLIED WARRANTY CANNOT BE EXCLUDED, SUCH WARRANTY IS LIMITED IN DURATION TO THE WARRANTY PERIOD. BECAUSE SOME STATES OR JURISDICTIONS DO NOT ALLOW LIMITATIONS ON HOW LONG AN IMPLIED WARRANTY LASTS, THE ABOVE LIMITATION MAY NOT APPLY. THIS DISCLAIMER AND EXCLUSION SHALL APPLY EVEN IF THE EXPRESS WARRANTY SET FORTH ABOVE FAILS OF ITS ESSENTIAL PURPOSE.

Revision number: Rev. 0

Author: Joel Soukkio

Accepted: Dawn Greig

Date: February 2023



Please Contact:

Your Reseller / Salesperson or Picote

www.picotegroup.com



International Offices

Finland
United Kingdom
USA

Technical Support

support@picotesolutions.com

Claims

claims@picotesolutions.com

Production & R&D

Pienteollisuustie 24
06450 Porvoo, Finland
support@picotesolutions.com

Authorised Resellers:

www.picotesgroup.com/resellers